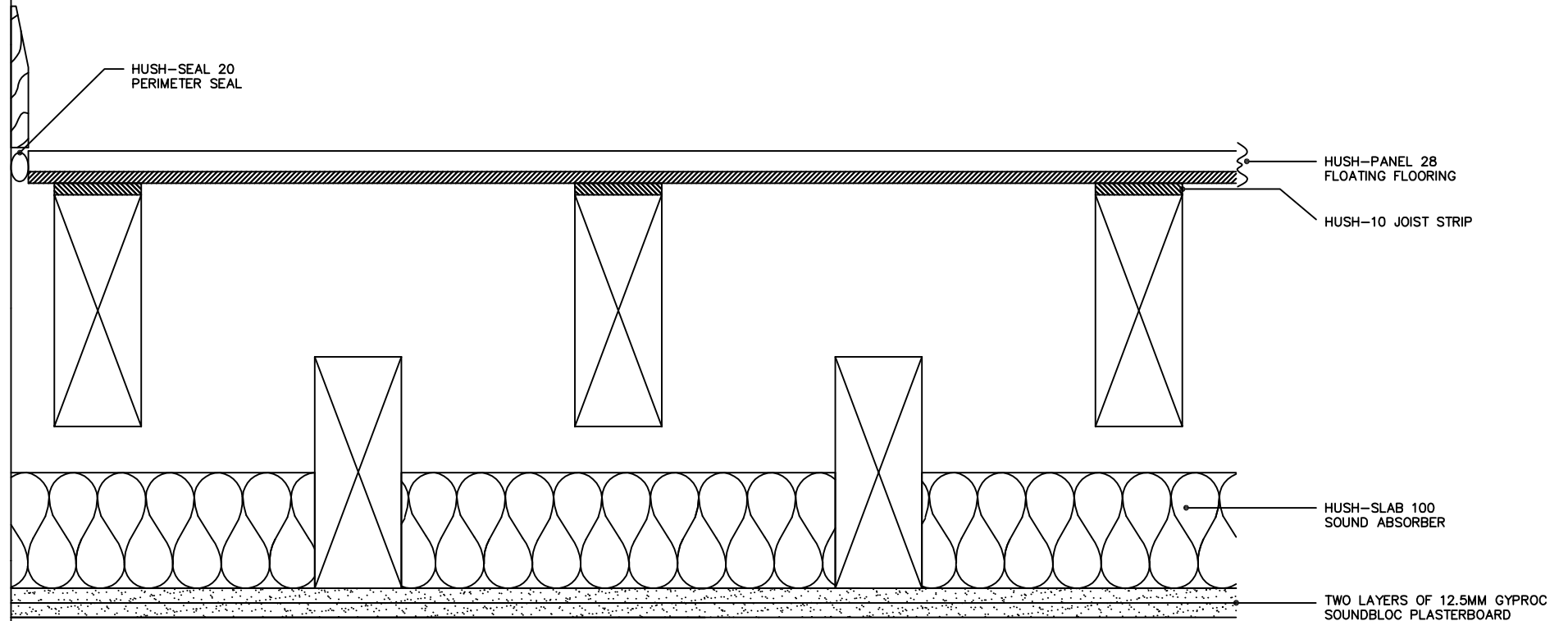


TYPICAL TEST RESULT

IMPACT L<sub>n</sub>TW = 52dB    AIRBORNE D<sub>n</sub>TW = 57dB    D<sub>n</sub>TW + CTR = 51dB  
RESULTS BASED ON 200MM JOISTS AT 450MM CENTRES, WITH 100MM CEILING JOISTS

HUSH-PANEL 28 LAID OVER HUSH-10 JOIST STRIPS, SECURED TO JOIST TOPS AS PER MANUFACTURERS INSTRUCTIONS, WITH ALL PERIMETERS SEALED USING HUSH-SEAL 20.

INDEPENDANT CEILING JOISTS ON JOIST HANGERS, WITH HUSH-SLAB 100 FITTED BETWEEN. TWO LAYERS OF 12.5MM SOUNDBLOC FITTED TO THE UNDERSIDE OF THE CEILING JOISTS, SEALING ALL PERIMETERS PRIOR TO SKIMMING. PROVIDES A 1 HOUR FIRE RESISTANCE AT CEILING LEVEL.



HUSH (UK) LTD  
HUSH-SYSTEM IC  
TYPE HD1020